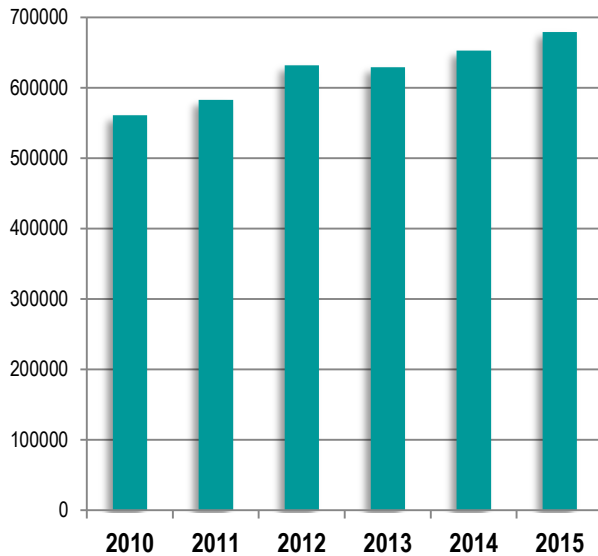


The Future: Entrepreneurship/ Business

New business launches have seen significant gains nearly every year since 2010. Combined with the lightning pace of technology advances and an encouraging financial climate, young startups are taking a foothold across the country. In 2015, approximately 680,000 new businesses were 'born' in the U.S.

Number of Startups in the U.S., by year



Source: Bureau of Labor Statistics, April 28, 2016

The Bureau of Labor Statistics reports more than **3 million jobs** were created in 2015 by startups.

If you can dream it,
you can do it.

Walt Disney

Additional information can be requested from your Guidance Counselor.

Jonathan Law HS Guidance: (203) 783-3574

Joseph A. Foran HS Guidance: (203) 783-3502

DISTRICT INSTRUCTIONAL SUPERVISORS

Justine LaSala

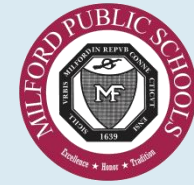
Science and Technical Arts
jlasala@milforded.org
(203) 783-3486

Lisa Swanson

Math and Business
lswanson@milforded.org
(203) 783-3476

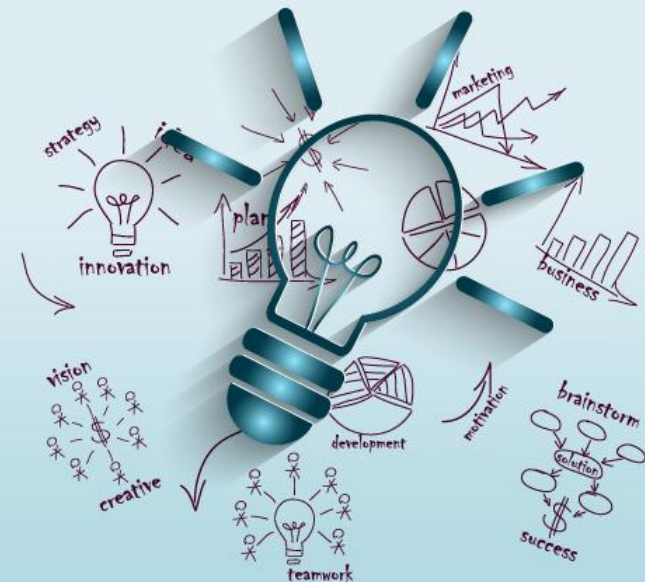
The Career Pathway concept was introduced in the Milford Public Schools in the Fall of 2015. The first Pathway offered intensive instruction in the field of *Computer Science*. The **Entrepreneurship & Business Management Pathway** is the second in the series. For a full description of the courses specified for this Pathway, please refer to the *2017-18 Program of Studies*.

www.milforded.org



Entrepreneurship & Business Management

Career Pathway



What is a Career Pathway?

A “career pathway” is characterized by concentration in a particular field of study through a sequence of courses which lead to the development of a particular set of knowledge and skills aligned with career interests. The pathway will culminate in a student-driven learning experience.

The **Entrepreneurship/Business Management Pathway** will provide students with a solid foundation of the skills and the technical experience needed to pursue a career in business or to start their own business.



Entrepreneurship/Business Management

Starting with the Class of 2021, high school students in the Milford Public Schools can elect to participate in the Entrepreneurship/Business Management Career Pathway. This pathway consists of both required and elective courses.

Completion of the Entrepreneurship/Business Management Pathway requires a minimum of 3.0 high school credits in specified business, mathematics, and social studies courses. There are 4 required courses: *Introduction to Business* (0.5 credits), *Accounting I* (0.5 credits), *Marketing I* (0.5 credits), and your choice of either the completion of a *Capstone Project* (0.5 credits) **or** *E-Commerce & Entrepreneurship II* (0.5 credits each).

Courses Offered

Course Title	Credits	Level	Grades Offered			
Introduction to Business <i>(required)</i>	0.5	ES	9	10	11	
Accounting I <i>(required)</i>	0.5	ES		10	11	12
Marketing I <i>(required)</i>	0.5	ES		10	11	12
Business Management <i>(coming in 2018-19)</i>	1.0	ES				
Business Law	0.5	ES		10	11	12
E-Commerce & Entrepreneurship I	0.5	1			11	12
Statistics and Probability	1.0	2			11	12
AP Statistics	1.0	AP			11	12
Economics	0.5	2, 3			11	12
Accounting II	0.5	ES		10	11	12
Marketing II	0.5	ES		10	11	12
E-Commerce & Entrepreneurship II -or-	0.5	1			11	12
Capstone Project <i>(one required)</i>	0.5	--			11	12